






Neighborhood: Westnedge Hill

Proposed Zoning

-  CC2
-  Commercial Node
-  RM15
-  RS5
-  Neighborhood

MAP DESCRIPTION:

This map shows parcels and their proposed zoning district. Parcels not shown on the map are not being considered for rezoning.

DISCLAIMER:

This map is a user-generated public output from a mapping software and is for reference only. Data layers on this map may or may not be accurate, current, or otherwise reliable. **THIS MAP IS NOT TO BE USED FOR NAVIGATION.** The changes shown on this map have not been finalized.

Learn about Proposed Updates to the

Zoning Code & Map



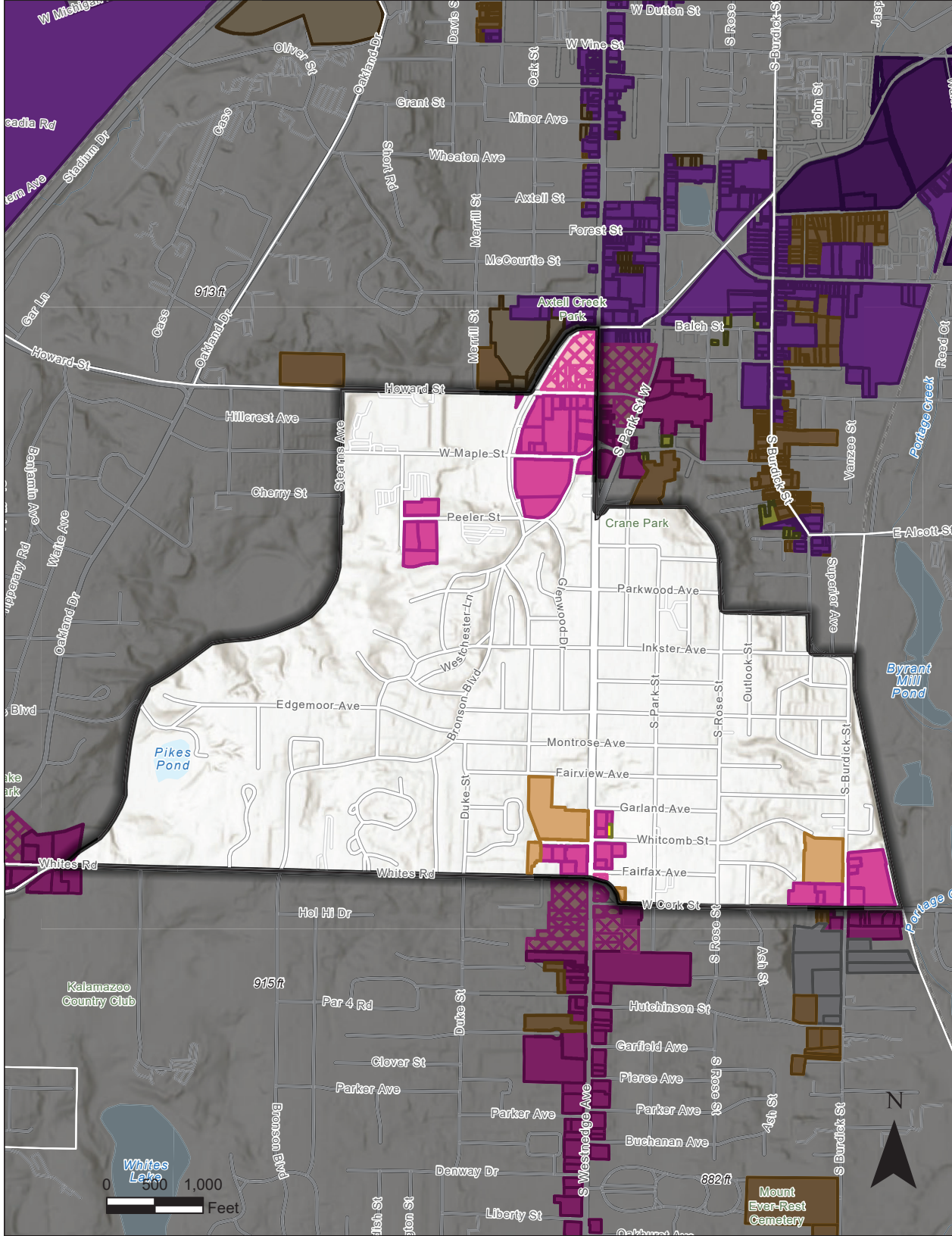
This project includes changes to commercial zoning districts & commercial development standards.

Review these changes at
www.imaginekalamazoo.com/projects/zoningupdates.

These changes are intended to:

- Update old or out-of-date standards, some which were created in 2005.
- Align the Zoning Code with Imagine Kalamazoo & the 2025 Master Plan.
- Support economic development & community investment through better written & streamlined rules.

Utilice este código QR para esta información en español.



Street Name	Full Property Address	Existing Zone	Proposed Zone	Neighborhood
BURDICK	3000 S BURDICK ST	RM15/CC	RM15	Westnedge Hill
BURDICK	3017 S BURDICK ST	M1	CC2	Westnedge Hill
BURDICK	3023 S BURDICK ST	M1	CC2	Westnedge Hill
BURDICK	3003 S BURDICK ST	M1	CC2	Westnedge Hill
CORK	110 W CORK ST	CC/RM15	CC2	Westnedge Hill
CORK	104 W CORK ST	CC	CC2	Westnedge Hill
CORK	434 W CORK ST	CO/CC	RM15	Westnedge Hill
CORK	108 W CORK ST	CC	CC2	Westnedge Hill
CORK	107 E CORK ST	CC	CC2	Westnedge Hill
CROSSTOWN	643 W CROSSTOWN PKWY	CC	CC2	Westnedge Hill
CROSSTOWN	2015 W CROSSTOWN PKWY	CC	CC2	Westnedge Hill
CROSSTOWN	555 W CROSSTOWN PKWY	CC	Com Node	Westnedge Hill
CROSSTOWN	575 W CROSSTOWN PKWY	CC	Com Node	Westnedge Hill
CROSSTOWN	601 W CROSSTOWN PKWY	CC	CC2	Westnedge Hill
FAIRVIEW	615 FAIRVIEW AVE	CO/RM15/RS5	RM15	Westnedge Hill
GARLAND	447 GARLAND ST	CO/CC	CC2	Westnedge Hill
HOWARD	525 HOWARD ST	CC	CC2	Westnedge Hill
HOWARD	519 HOWARD ST	CC	CC2	Westnedge Hill
HOWARD	515 HOWARD ST	CC	CC2	Westnedge Hill
HOWARD	605 HOWARD ST	CC	CC2	Westnedge Hill
HOWARD	528 HOWARD ST	CC	Com Node	Westnedge Hill
HOWARD	516 HOWARD ST	CC	Com Node	Westnedge Hill
HOWARD	510 HOWARD ST	CC	Com Node	Westnedge Hill
HOWARD	522 HOWARD ST	CC	Com Node	Westnedge Hill
HOWARD	611 HOWARD ST	CC	CC2	Westnedge Hill
HUDSON	2121 HUDSON ST	CO	CC2	Westnedge Hill
HUDSON	2131 HUDSON ST	CO	CC2	Westnedge Hill
MAPLE	590 W MAPLE ST	CC	CC2	Westnedge Hill
MAPLE	520 W MAPLE ST	CC	CC2	Westnedge Hill
MAPLE	620 W MAPLE ST	CC	CC2	Westnedge Hill
MAPLE	624 W MAPLE ST	CC	CC2	Westnedge Hill
MAPLE	601 W MAPLE ST	CC	CC2	Westnedge Hill
MAPLE	700 W MAPLE ST	CC	CC2	Westnedge Hill
PEELER	920 PEELER ST	CO	CC2	Westnedge Hill
PEELER	907 PEELER ST	CO	CC2	Westnedge Hill
WESTNEDGE	1718 S WESTNEDGE AVE	CC	Com Node	Westnedge Hill
WESTNEDGE	1804 S WESTNEDGE AVE	CC	CC2	Westnedge Hill
WESTNEDGE	1820 S WESTNEDGE AVE	CC	CC2	Westnedge Hill
WESTNEDGE	1830 S WESTNEDGE AVE	CC	CC2	Westnedge Hill
WESTNEDGE	1838 S WESTNEDGE AVE	CC	CC2	Westnedge Hill
WESTNEDGE	1844 S WESTNEDGE AVE	CC	CC2	Westnedge Hill
WESTNEDGE	3101 S WESTNEDGE AVE	CC	Com Node	Westnedge Hill
WESTNEDGE	3015 S WESTNEDGE AVE	CC/CO	CC2	Westnedge Hill
WESTNEDGE	3025 S WESTNEDGE AVE	CC	CC2	Westnedge Hill
WESTNEDGE	1710 S WESTNEDGE AVE	CC	Com Node	Westnedge Hill

WESTNEDGE	1906 S WESTNEDGE AVE	CC	CC2	Westnedge Hill
WESTNEDGE	2901 S WESTNEDGE AVE	CC/CO	CC2	Westnedge Hill
WESTNEDGE	2925 S WESTNEDGE AVE	CC/CO	CC2	Westnedge Hill
WESTNEDGE	3016 S WESTNEDGE AVE	CC/CO	CC2	Westnedge Hill
WESTNEDGE	1728 S WESTNEDGE AVE	CC	Com Node	Westnedge Hill
WHITCOMB	448 WHITCOMB ST	CC/CO	RS5	Westnedge Hill
WHITCOMB	435 WHITCOMB ST	CC/CO	CC2	Westnedge Hill
WHITCOMB	611 WHITCOMB ST	CO	CC2	Westnedge Hill
WHITCOMB	529 WHITCOMB ST	CC	CC2	Westnedge Hill
WHITCOMB	533 WHITCOMB ST	CC/CO	CC2	Westnedge Hill
WHITES	516 WHITES RD	CC	CC2	Westnedge Hill
WHITES	628 WHITES RD	CO/RM15	RM15	Westnedge Hill