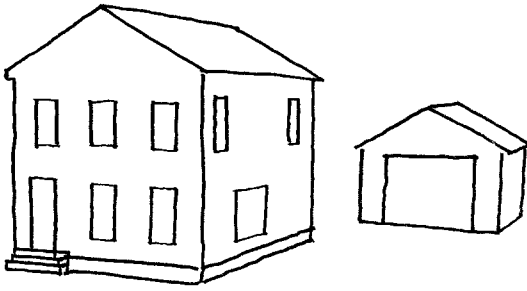


Live Work 1 District (LV1)

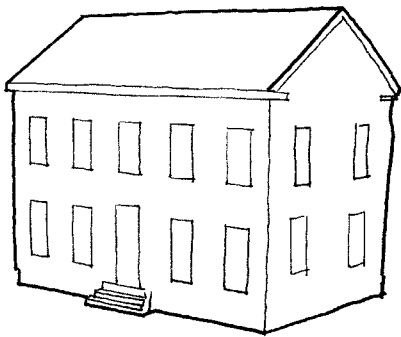


Buildings:

Residential: Detached & Attached
Cottage Commercial (House Converted
for Business)

Civic

Flex Building - could be residential
units, commercial, or mix of both



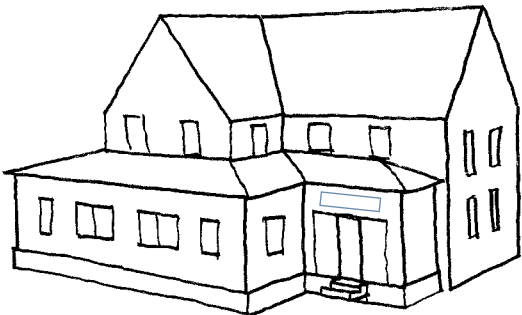
Uses:

Residential

Commercial

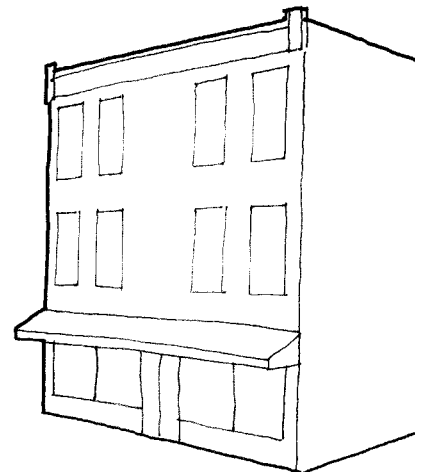
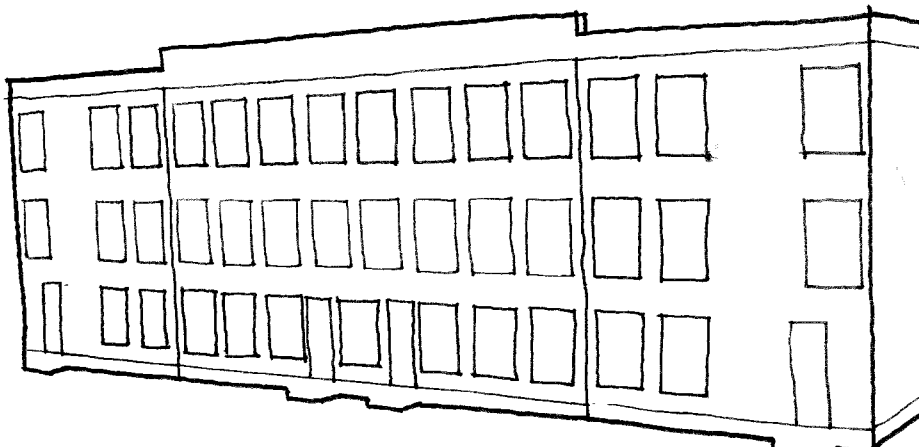
Civic

Craftsman Industrial



Height:

Up to 3 stories



Live Work 2 District (LV2)

Buildings:

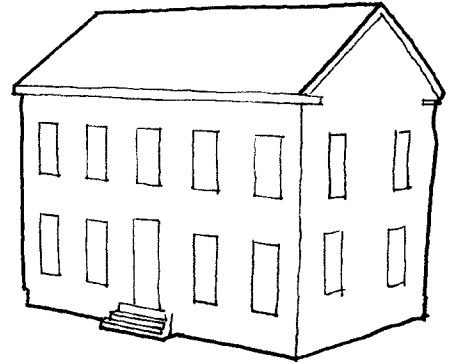
Residential - Attached

Cottage Commercial (House Converted for Business)

Civic

Flex - could be residential units, commercial, or mix of both

Warehouse



Uses:

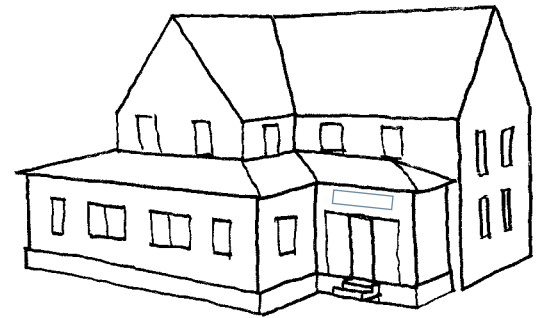
Residential (2+ units)

Commercial

Civic

Craftsman Industrial

Industrial



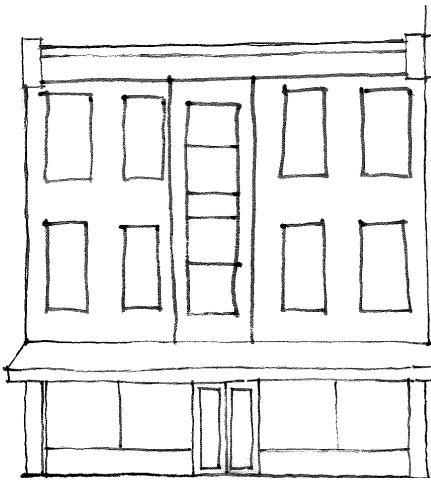
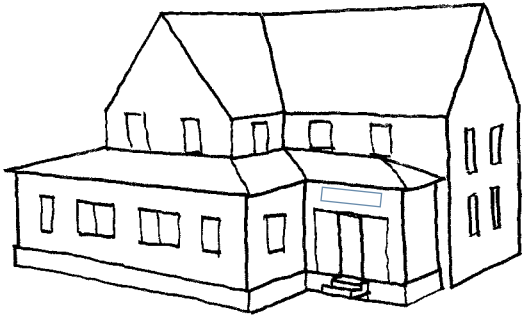
Height:

Up to 3 stories,

Up to 5 stories on Connector Streets like East Michigan & East Main



Node



Buildings:

Flex - mixed use, storefront building
Cottage Commercial

Uses:

Residential on upper floors
Commercial
Civic on upper floors
Craftsman Industrial

Height:

Minimum 2 stories
Maximum based on height in and around Node,



Existing Zoning Information

Community Commercial:

Use: R on upper floors only, civic, all commercial

Setback: up to property owner

Height: 65' or 5-6 stories

Commercial Office:

Use: limited R, civic, hotel, & office

Setback: minimum 15' from front property line

Height: 65' or 5-6 stories

Manufacturing:

Use: commercial & manufacturing

Setback: up to property owner

Height: no maximum

Residential Multiple Family (RM15)

Use: single unit, attached unit, multiple units

Setback: min. 25' from front property line

Height: 35' or 2-3 stories

Residential Single Family

Use: single unit

Setback: 25' from front property line

Height: 35' or 2-3 stories

